

**REQUEST FOR PROPOSALS
FOR TREE MAINTENANCE and REMOVAL
TOWN OF CHELSEA, VERMONT**

The Town of Chelsea will be accepting bids for tree removal and maintenance services starting in the Spring of 2025 and possibly continuing throughout the year and into 2026.

Objectives and qualifications for this project are as follows:

- The Town has already consulted with an arborist to identify trees in town that need maintenance, this should not be a part of the bid - See included tree inventory.
- Removal of designated trees should occur in a safe fashion with minimal impact to the surrounding grass, plants, trees, etc.
- Maintenance of trees not being removed should be done in a way to promote tree health and minimize hazards.
- Work should be done under the direction of a certified arborist, using best practices and in accordance with Vermont Urban & Community Forestry Program grant guidelines (details provided upon request).
- All areas should be left clear and free of any obstructions (such as holes, stumps, limbs, or other waste) and ready for grass or new trees to be planted in the vicinity.
- The contractor will be responsible for removal of all waste materials.
- Work schedule will need to be coordinated to not interfere with events happening in areas where work will be done (Town Greens, Rec Fields, etc.)
- Liability insurance covered up to \$1,000,000

Bid Process and Deadline

Bid packages must be sealed and received by **June 16th by 4:00 pm** in person or mailed to **PO Box 266 Chelsea, VT 05038** (ATTN: Selectboard/Town Administrator). Please include the following information in your bid:

- On the outside of the sealed envelope: PO Box 266, Chelsea VT 05038 (care of the Selectboard/Town Administrator), Town of Chelsea Auditing Services RFP, the deadline for bid submission (June 16th, 4:00 pm)
- A copy of bond/insurance
- A cover sheet with the title of the RFP; the bidder's name, physical address, and all other contact information
- A total proposed contract amount
- Name of the certified arborist consulting on the project, if they are not the main contact

Bid Opening

Sealed bids will be opened and selected by the Chelsea Selectboard during the regular Selectboard meeting at Town Hall (296 Vt Rte 110 Chelsea, VT 05038) on **June 17th at 6:30 pm**. Bids will be judged by the following factors:

- Quality of the services proposed
- Bidder's experience and reputation, including past performance for the Town
- Bidder's ability to meet all terms and conditions spelled out in this RFP
- Bidder's ability to perform within the specified time limits
- Price

Contact Information

Questions regarding this RFP shall be submitted by email to the Chelsea Forest & Parks Commission, at chelsea-forest-parks@googlegroups.com, CC'ing town.administrator@chelseavt.us. The Town will maintain a list of RFP questions and answers posted on the Town's website when received. Questions will be accepted until 5:00pm on June 13th, to ensure all parties have adequate time to review the answers before the proposal submission deadline.

Disclosure

The Town of Chelsea is an equal opportunity employer.

The Selectboard reserves the right at its sole discretion to reject any and all bids, wholly or in part, to waive any informalities or any irregularities therein, to accept any bid even though it may not be the lowest bid, to call for rebids, to negotiate with any bidder, and to make an award which in its sole and absolute judgment will best serve the Town's interest. The Selectboard reserves the right to investigate the financial condition of any bidder to determine his or her ability to assure service throughout the term of the contract. The Town assumes no responsibility and no liability for costs incurred relevant to the preparation and submission of proposals or any other costs prior to the issuance of a contract.



Amber Tree Service, LLC

247 Bobbinshop Road

Chelsea VT 05038

(802) 685-4501

(802) 522-4884

Peter & Eliza Amber- Certified Arborists

AmberTreeService@gmail.com

Tree Inventory for Chelsea Town

Assessment done November 2024

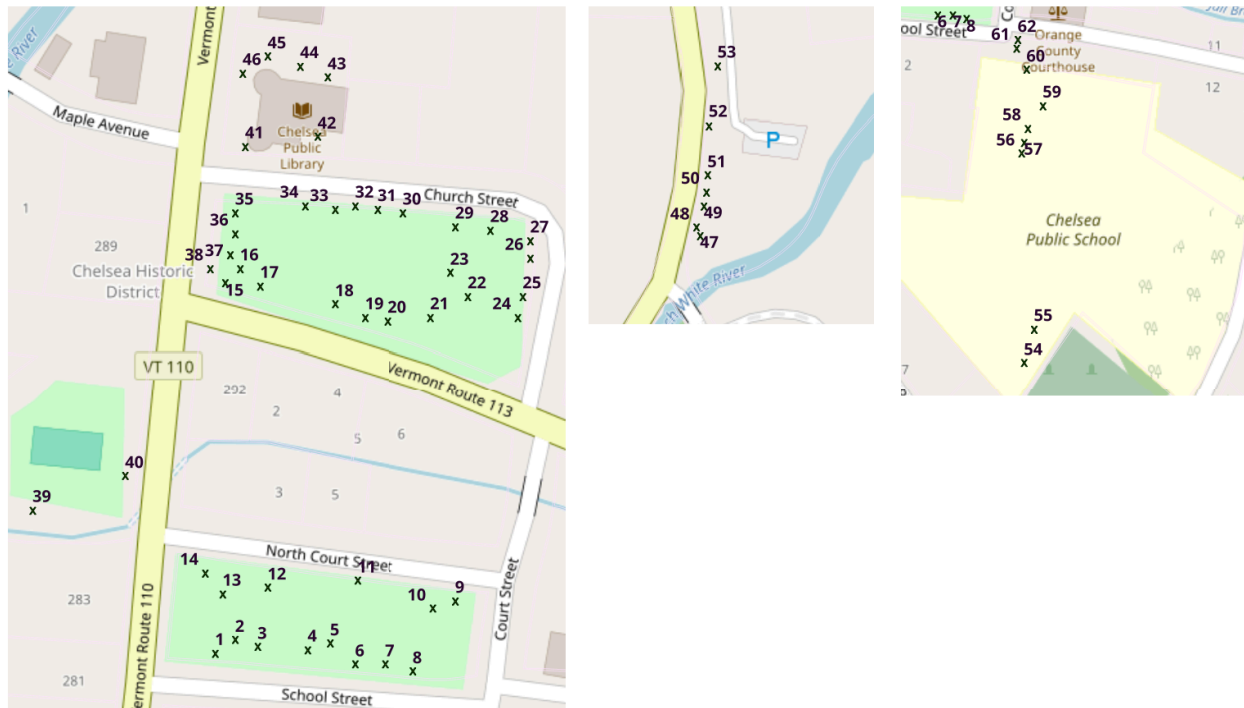
Scope of project: Town commons, library, public playground, recreation (Heath) field, public school

Summary:

At the request of Chelsea Town and the Forest and Parks Commission, 62 trees on four parcels of publicly owned property were surveyed to complete this tree inventory. Each tree was given an ID number, measured diameter at breast height (DBH), location marked, and assessed for health. This survey showed that 26% of these public trees were in serious decline - given a rank of poor or in need of removal. The vast majority of these trees in decline are located in the north common due to high activity, high salt levels, and lack of biodiversity. Trees surrounding the library and Public school have received tree care over the years are just starting to overgrow towards the structures again. The trees located at the Heath field and Public School are in good health and slightly overgrown. See map 2 for health distribution.

Health Rank Parameters:

- (0) **Removal** : Significant deadwood in crown, presence of downed deadwood, presence of fungal fruiting bodies on trunk, poor limb structure, in a high risk area - near buildings, roads, or highly trafficked areas. Tree is in decline and must be removed for safety. See photos 1-3 for example.
- (1) **Poor** : Moderate deadwood in crown and shoot die back, major structural issues (ie. girdling root, hazardous leader union, storm damage), presence of disease or pests, poor bud growth and small leaves. Tree is in decline with a small possibility of recovery.
- (2) **Fair** : Presence of deadwood, some structural problems such as waterspout overgrowth or storm damage, decent leaf vigor. Tree has a number of issues but shows signs of possible recovery.
- (3) **Good** : Overall healthy tree with vigorous buds and leaf growth with some need of intervention and maintenance.
- (4) **Excellent** : Great branch structure and spacing, vigorous buds, healthy root flair, absence of disease and pest



Map 1: GPS location of each tree with corresponding ID numbers. First map is of the town center, second of the Heath Field, third is of the Public School



Photos 1-3: sugar maple on the north east corner of the north common (ID 27). Tree shows significant die back of the main leader, receding wound wood on the trunk, downed deadwood, and hazardous hangers. Considering these factors in addition to the high levels of traffic this area has, it should be removed. Trees #15, 26, 35,

Table 1: Location Distribution

By location	Maintenance #	removal #
S Common	14	0
N Common	18	6
Playground	2	0
School	9	0
Library	6	0
Heath field	6	1

Total trees surveyed by location divided by trees recommended to be removed vs maintained

Table 2: DBH

DBH	Maintenance #	Removal #
0-6	10	1
6-12	12	1
12-18	16	4
18-24	13	1
24+	4	0
Total	55	7

Total trees surveyed by size (DBH) divided by trees recommended to be removed vs maintained

Table 3: Prominent Species and percent in decline

Common Name	Total Quantity	% of total surveyed	% in decline
Sugar Maple	13	21%	38%
Crab Apple	11	18%	0%
Norway Maple	11	18%	15%
Red Oak	4	6%	0%
Green Ash	3	5%	0%

Additional species include Little leaf linden (2), tree lilac (2), White Ash (2), Balsam Fir (1), Black locust (1), Box Elder (1), Celebration Maple (1), Hedge Maple (1), Maccia (1), Red maple (1), Shad (1), Silver Maple (1), Trifolia Maple (1), weeping Cherry (1), and Swamp Oak (1). This data shows that the Norway and Sugar maples are a large percentage of the town trees surveyed and have the highest rate of decline. Other species should be considered when planting in the future.

Recommendations:

All trees have been divided into two categories of maintenance or removal. Regular pruning every 3-5 years is recommended for all trees in public areas to maintain proper elevation, encourage healthy growth, and catch hazards early. Pruning to ISA Standards include *Cleaning* dead, deceased, and damaged branches, *Thinning*, for aeration and light, *Raising* the canopy for clearance of the public and structures, and *Restoration* to repair a tree that has experienced significant damage, either from a storm, topping or utility clearance. Regular pruning using ISA standards have shown to improve structure, health and longevity.

Special attention should be given to the box elder (ID #39) in the public playground and the crab apple (ID #55) in the pre-K play pen due to their proximity to children and presence of deadwood. Four trees (ID #5, 20, 36, and 27) should be pruned this coming spring and assessed for implementing a cable to mitigate risk of failure in included bark unions.

Six trees will need to be removed from the North Common as soon as possible as they are in significant decline and in a high trafficked area. One black locust should be removed from the Health Field. This tree has codominant leaders and is not in a desired spot for the athletic fields. It is currently very small and easy to remove and is recommended that it is removed before it reseeds.

Vertical mulching/fertilization could improve the vigor of the maples on the west side of the north common significantly and should be considered this coming year after bud burst.

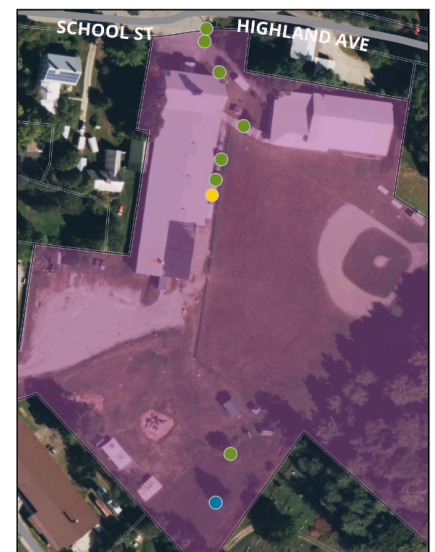
Additionally, a new biodiverse selection should be considered to replant the removed trees and spaces in the commons. Consider tree varieties that are salt and drought resistant.

Full tree inventory is included on the last page.

Scale of Work : Chelsea Village

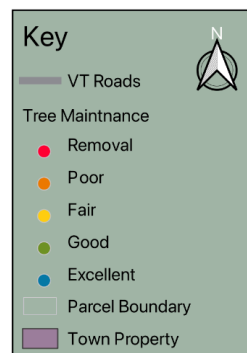


Site 1: Town commons, library and playground



Site 2: Public school grounds

Site 3: Heath field (recreational)



0 50 100 m

Condition	Total # of Trees
Removal	7
Poor	9
Fair	15
Good	28
Excellent	3

Map produced by Amber Tree Service LLC.
for Chelsea Town. Survey done 11/10/2024

EPSG:3857

Map 2: Tree health distribution of inventory showing significant decline of the north common and moderate decline in the south common and playground.

ID #	Common Name	DBH (in")	Rank	Location	Coordinates	Health notes and recommendations
1	Sugar Maple	26	2	South Common	43.98768, -72.44764	Gurdling root, prune away from powerlines, prune to ISA standards
2	Sugar Maple	18	3	South Common	43.98772, -72.44756	smaller deadwood, prune to ISA standards
3	Swamp Oak	13	3	South Common	43.98770, -72.44747	Sapsucker damage, thinning
4	Norway Maple	20	2	South Common	43.98769, -72.44727	Gurdling root, prune to ISA standards
5	Red Oak	15	3	South Common	43.98771, -72.44718	codominant leaders, asses for cable, prune to mitigate risk
6	Norway Maple	18	3	South Common	43.98765, -72.44708	Prune to ISA Standards
7	Norway Maple	15	3	South Common	43.98765, -72.44696	Gurdling root, Prune to ISA Standards
8	White Ash	18	1	South Common	43.98763, -72.44685	Storm damaged, leaning towards road, to be monitered for removal
9	little leaf linden	14	1	South Common	43.98783, -72.44668	Wound in trunk, poor structure, to be monitered for removal due to syste
10	Norway Spruce	3	4	South Common	43.98781, -72.44677	Prune to ISA Standards
11	Green Ash	11	3	South Common	43.98789, -72.44707	Structure prune and moniter for EAB
12	Norway Maple	19	2	South Common	43.98787, -72.44743	Gurdling root, Prune to ISA Standards
13	Norway Maple	20	3	South Common	43.98785, -72.44761	Gurdling root, Prune to ISA Standards
14	Red Oak	18	4	South Common	43.98791, -72.44768	growing towards powerlines, Prune to ISA Standards
15	Sugar Maple	13	0	North Common	43.98874, -72.44760	Significant deadwood, presence of conks, hazardous to be removed
16	Shad	5	0	North Common	43.98878, -72.44754	Sooty mold and large wound, removal
17	Hedge Maple	5	1	North Common	43.98873, -72.44746	Improper structure, significant decay on trunk, moniter for removal
18	Sugar Maple	15	0	North Common	43.98868, -72.44716	Significant dead wood and trunk rot, to be removed
19	Green Ash	11	2	North Common	43.98864, -72.44704	Prune to ISA Standards and moniter for EAB
20	Norway Maple	22	2	North Common	43.98863, -72.44695	Gurdling root, stucture prune, possible cable
21	Celebration Maple	16	3	North Common	43.98864, -72.44678	Structure prune, codominant stem
22	Norway Spruce	4	1	North Common	43.98870, -72.44663	Spruce gall, didn't root properly
23	Balsam Fir	21	1	North Common	43.98877, -72.44670	Remove dead leader, Prune to ISA Standards and moniter
24	Norway Maple	17	2	North Common	43.98864, -72.44643	Gurdling root, Prune to ISA Standards
25	Norway Maple	17	1	North Common	43.98870, -72.44641	Gurdling root, dead top, prune and moniter for removal
26	Sugar Maple	16	0	North Common	43.98881, -72.44638	Significant deadwood in crown, low leaf vigor, to be removed
27	Sugar Maple	18	0	North Common	43.98886, -72.44638	Significant downed deadwood, loss of central leader, large wound on trun
28	Green Ash	11	2	North Common	43.98889, -72.44654	Prune to ISA Standards and moniter for EAB
29	Sugar Maple	13	3	North Common	43.98890, -72.44668	Prune to ISA Standards
30	White Ash	14	2	North Common	43.98894, -72.44689	Prune to ISA Standards and moniter for EAB
31	Norway Maple	16	1	North Common	43.98895, -72.44699	Serious gurdling root, moniter for sudden decline
32	Red Maple	13	1	North Common	43.98896, -72.44708	No central leader, Prune to ISA Standards
33	Silver Maple	13	2	North Common	43.98895, -72.44716	Prune to ISA Standards
34	Norway maple	23	3	North Common	43.98896, -72.44728	Gurdling root, Prune to ISA Standards
35	Sugar Maple	17	0	North Common	43.98894, -72.44756	Significant deadwood in crown, presence of conks low leaf vigor, to be ren
36	Sugar Maple	24	2	North Common	43.98888, -72.44756	codominant leaders, assess for cable, moniter leaves in spring
37	Norway Maple	18	2	North Common	43.98882, -72.44758	No central leader, structure prune and cable
38	Sugar Maple	21	2	North Common	43.98878, -72.44766	Prune to ISA Standards
39	Box Elder	33	1	Playground	43.98809, -72.44837	leaning over playground, Prune large deadwood and lighten leader
40	little leaf linden	17	2	Playground	43.98819, -72.44800	Remove root shoots, Prune to ISA Standards
41	Sugar Maple	40	2	Library	43.98913, -72.44752	Contact electric company to create space around power lines
42	Crab Apple	9	3	Library	43.98916, -72.44723	Prune to ISA Standards
43	Multistem tree Lilac	4	3	Library	43.98933, -72.44719	Prune to ISA Standards
44	Multistem tree Lilac	5	3	Library	43.98936, -72.44730	Prune to ISA Standards
45	Crab Apple	12	3	Library	43.98939, -72.44743	Prune to ISA Standards
46	Sugar Maple	20	3	Library	43.98934, -72.44753	Prune to ISA Standards
47	Sugar Maple	17	3	Heath Field	43.97810, -72.44758	Prune for elevation and ISA Standards
48	Crab Apple	9	3	Heath Field	43.97815, -72.44761	Prune for elevation and ISA Standards
49	Crab Apple	5	3	Heath Field	43.97827, -72.44755	Prune for elevation and ISA Standards
50	Crab Apple	4	3	Heath Field	43.97835, -72.44753	Prune for elevation and ISA Standards
51	Crab Apple	4	3	Heath Field	43.97845, -72.44752	Prune for elevation and ISA Standards
52	Black Locust	10	0	Heath Field	43.97873, -72.44751	Poor location for black locust and poor structure
53	Red Oak	4	3	Heath Field	43.97907, -72.44744	Prune for elevation and ISA Standards
54	Red Oak	13	4	School	43.98566, -72.44639	Minimal pruning focusing on long term limb structure
55	Crab Apple	10	3	School	43.98585, -72.44631	Over pre-K area, remove large deadwood and prune for eleveation
56	Weeping Cherry	3	2	School	43.98686, -72.44641	Prune for ISA Standards
57	Maccia	8	3	School	43.98692, -72.44639	Prune for ISA Standards
58	Trifolia Maple	9	3	School	43.98700, -72.44636	Prune for ISA Standards
59	Crab Apple	9	3	School	43.98713, -72.44624	Prune for ISA Standards
60	Crab Apple	9	3	School	43.98734, -72.44637	Prune for ISA Standards
61	Crab Apple	9	3	School	43.98746, -72.44645	Prune for ISA Standards
62	Crab Apple	10	3	School	43.98751, -72.44644	Prune for ISA Standards