

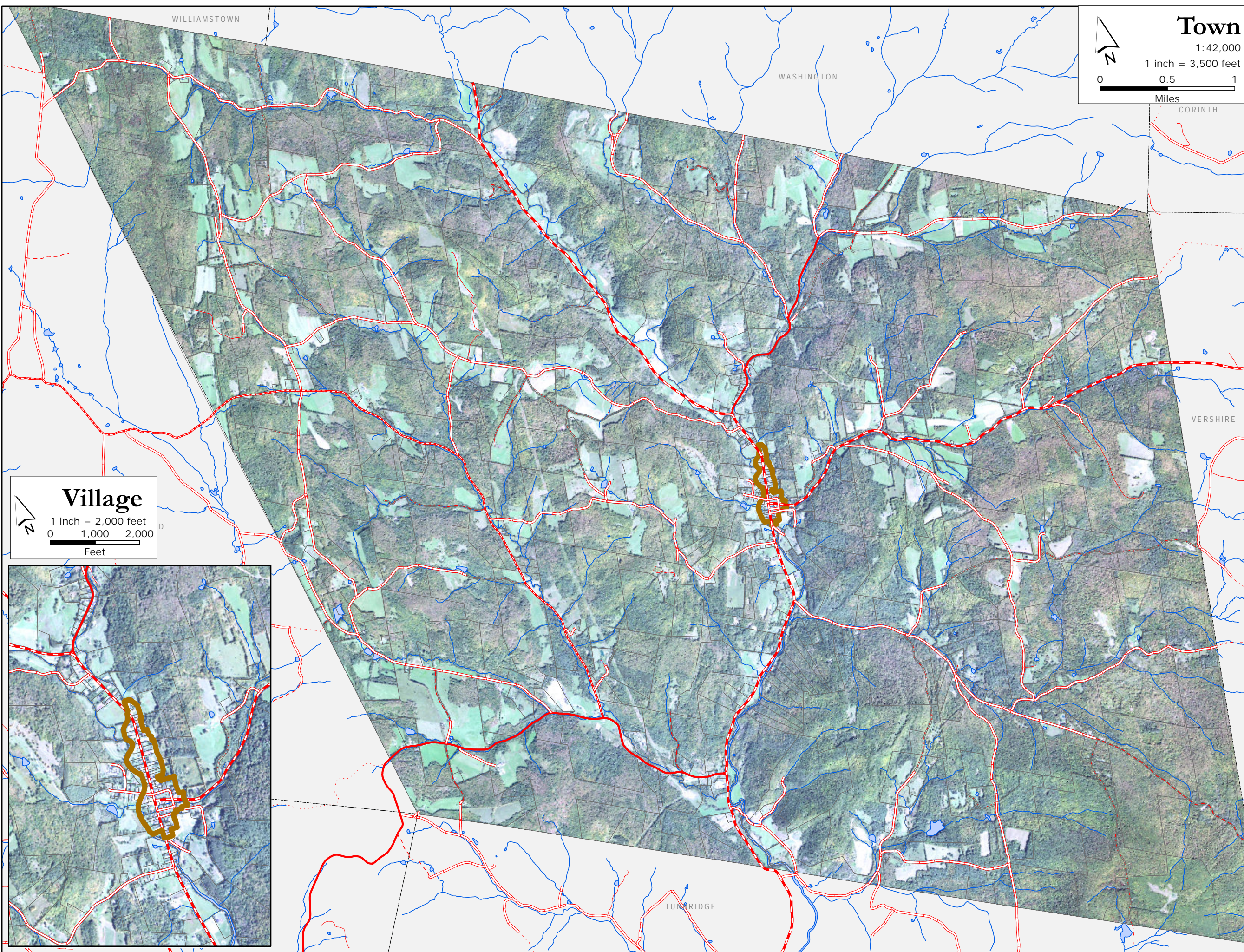
# Current Land Use

## Town Plan

Chelsea, Vermont

Map 2 of 7

Adopted:



**Town**  
1:42,000  
1 inch = 3,500 feet  
0 0.5 1  
Miles

**Village**  
1 inch = 2,000 feet  
0 1,000 2,000  
Feet

State Designated Village Center

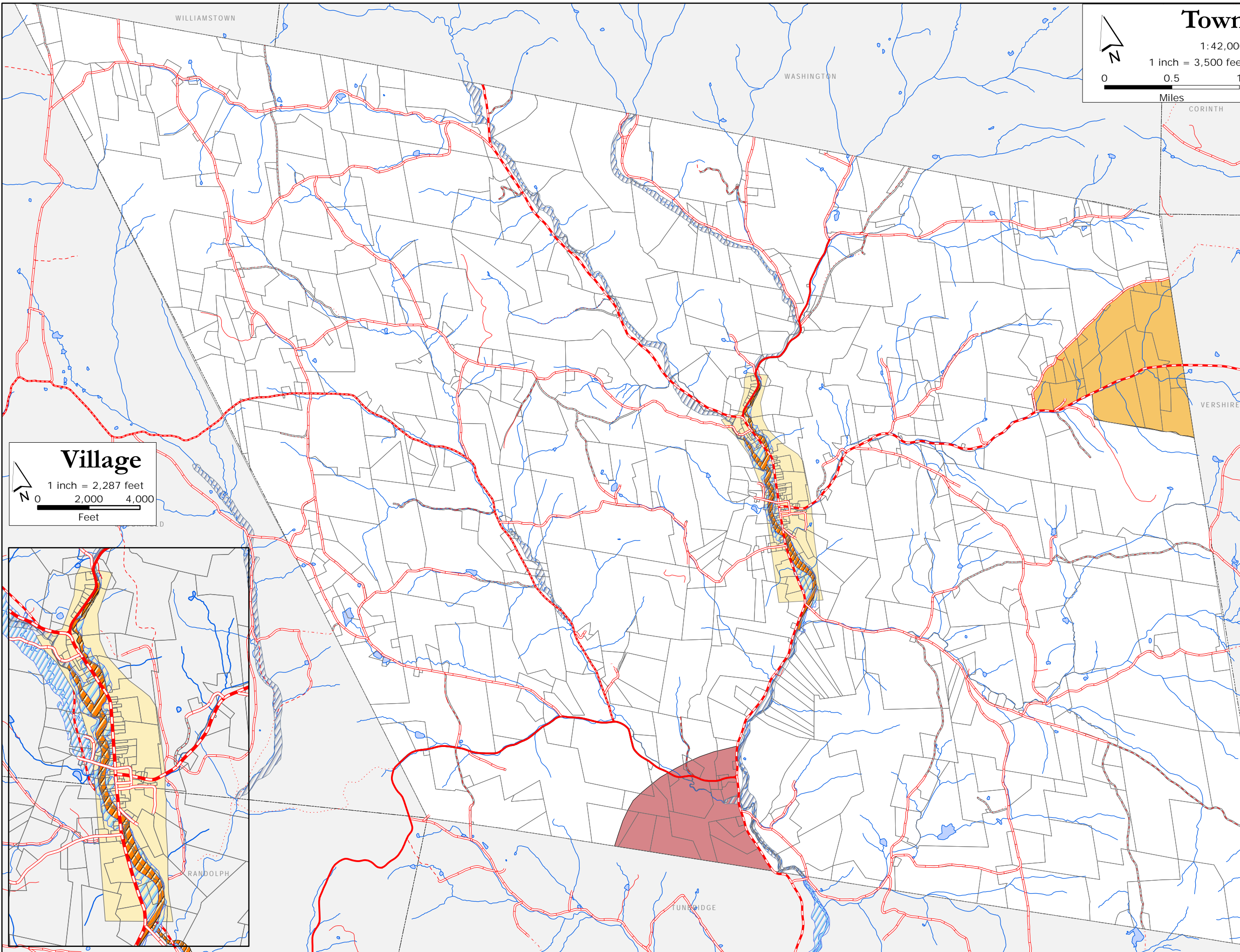
- parcel lines
- water
- e911 address
- VT route/TH cls 1
- TH cls 2
- TH cls 2 gravel
- TH cls 3
- TH cls 3 gravel
- TH cls 4
- - - trail
- private
- US route
- US interstate
- VT forest hwy

# Future Land Use Town Plan

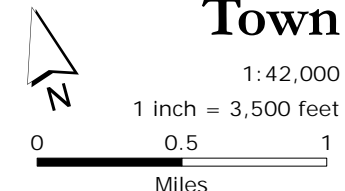
Chelsea, Vermont

Map 1 of 7

Adopted:



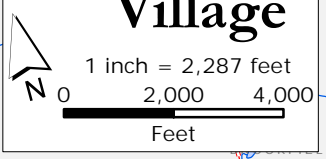
## Town



### LAND USE AREAS

- INDUSTRIAL
- MIXED-USE
- VILLAGE
- RURAL RESIDENTIAL
- Floodplain
- Floodplain (with elevation data)
- Floodway

## Village



















- parcel lines
- water
- e911 address
- VT route/TH cls 1
- TH cls 2
- TH cls 2 gravel
- TH cls 3
- TH cls 3 gravel
- TH cls 4
- trail
- private
- US route
- US interstate
- VT forest hwy

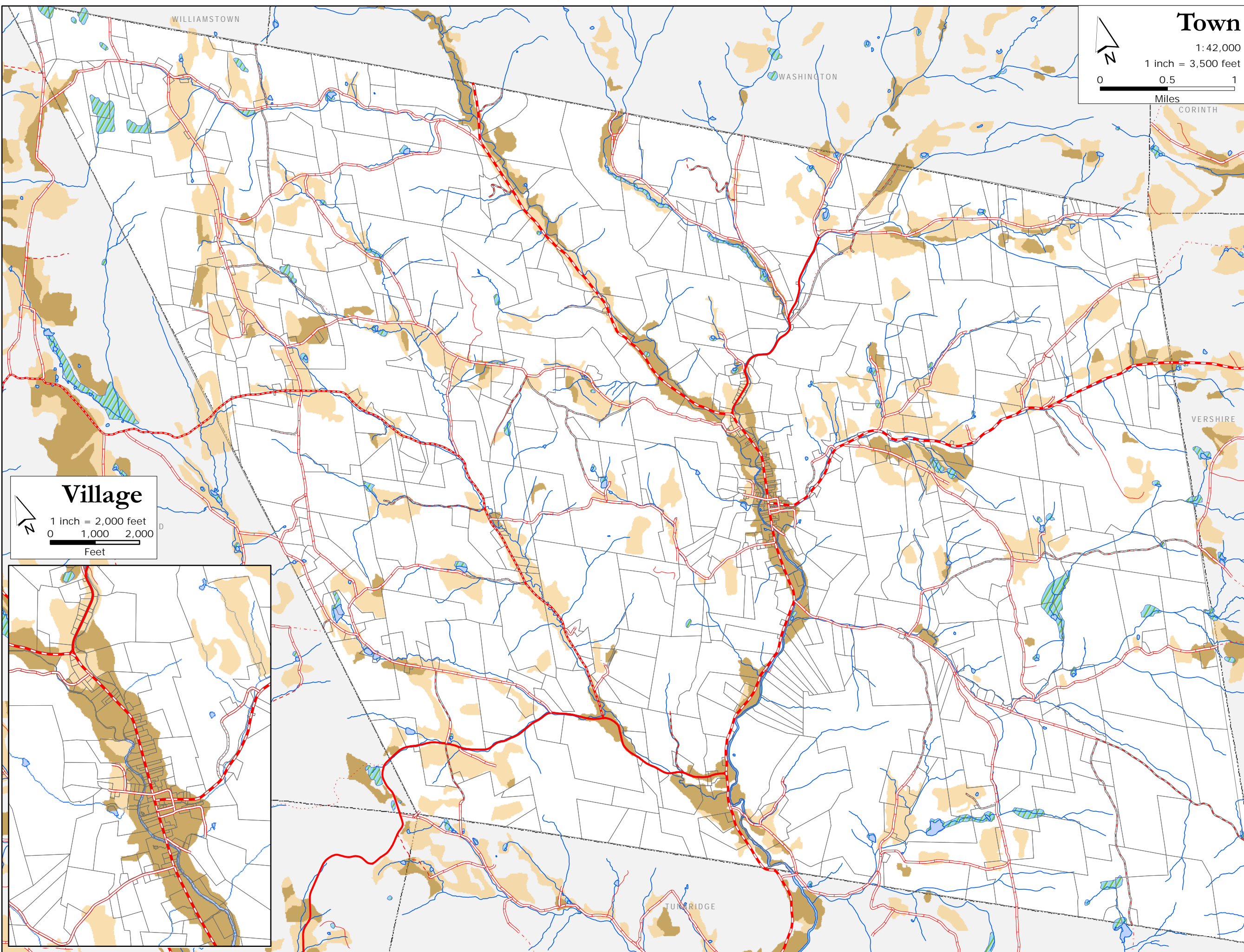
# Primary Agriculture Areas

Town Plan  
Chelsea, Vermont  
Map 3 of 7

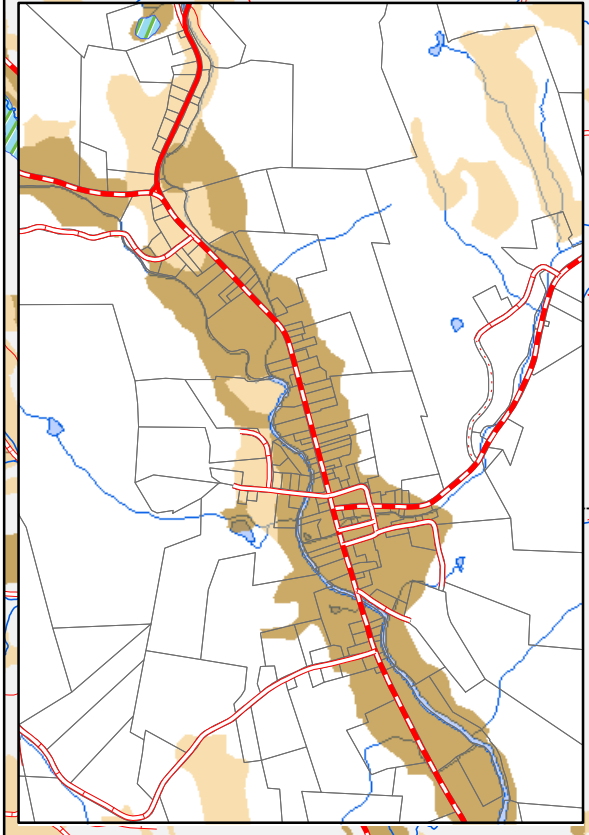
Adopted:

-  PRIME AG.
-  SECONDARY STATEWIDE AG.
-  Vermont State Wetlands

-  water
-  e911 address
-  VT route/TH cls 1
-  TH cls 2
-  TH cls 2 gravel
-  TH cls 3
-  TH cls 3 gravel
-  TH cls 4
-  trail
-  private
-  US route
-  US interstate
-  VT forest hwy



**Village**  
1 inch = 2,000 feet  
0 1,000 2,000  
Feet



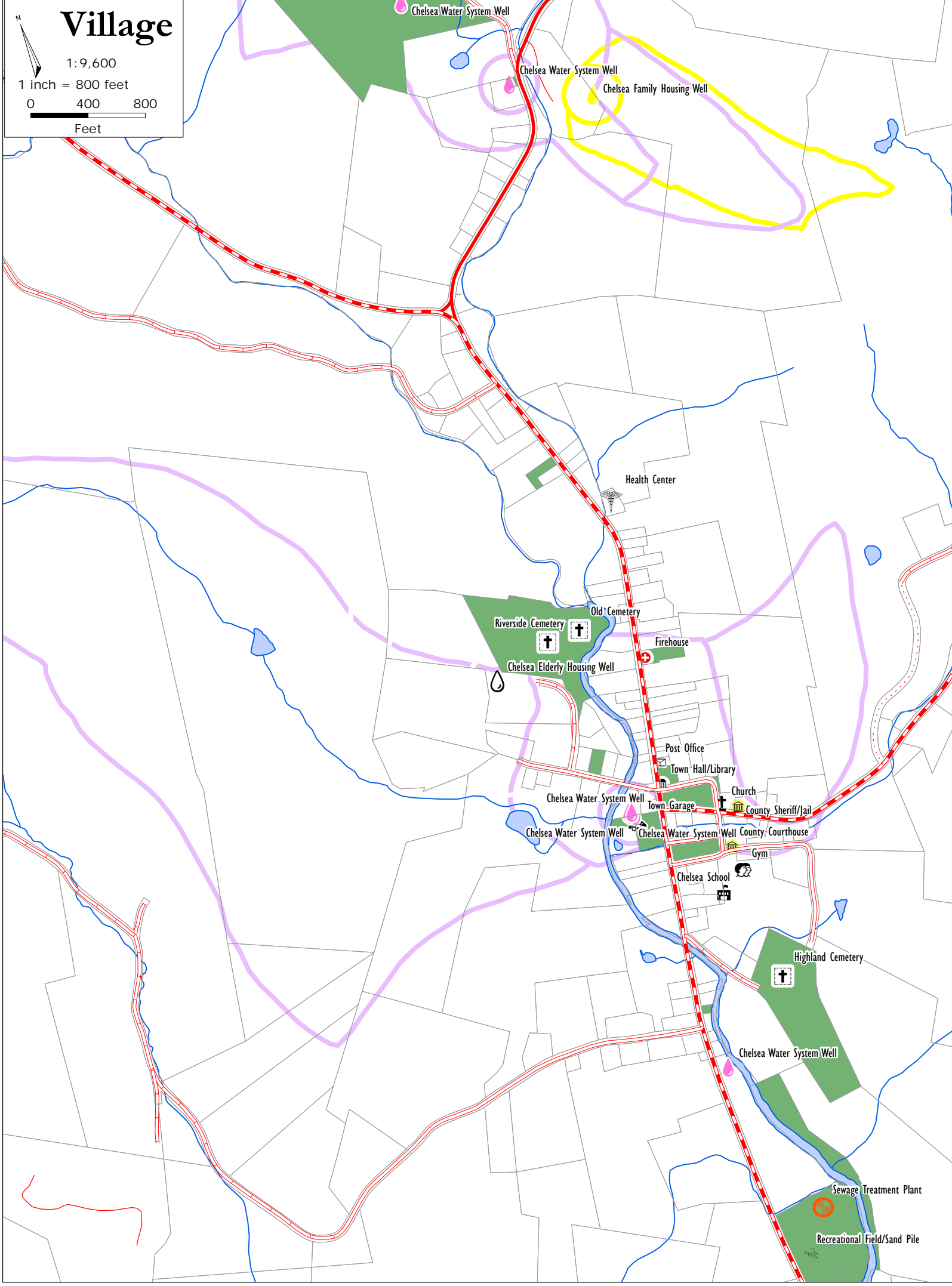
**Village**

1:9,600

1 inch = 800 feet

0 400 800

Feet



**Current & Future  
Utilities,  
Facilities  
& Education  
Town Plan  
Chelsea, Vermont  
Map 4 of 7**

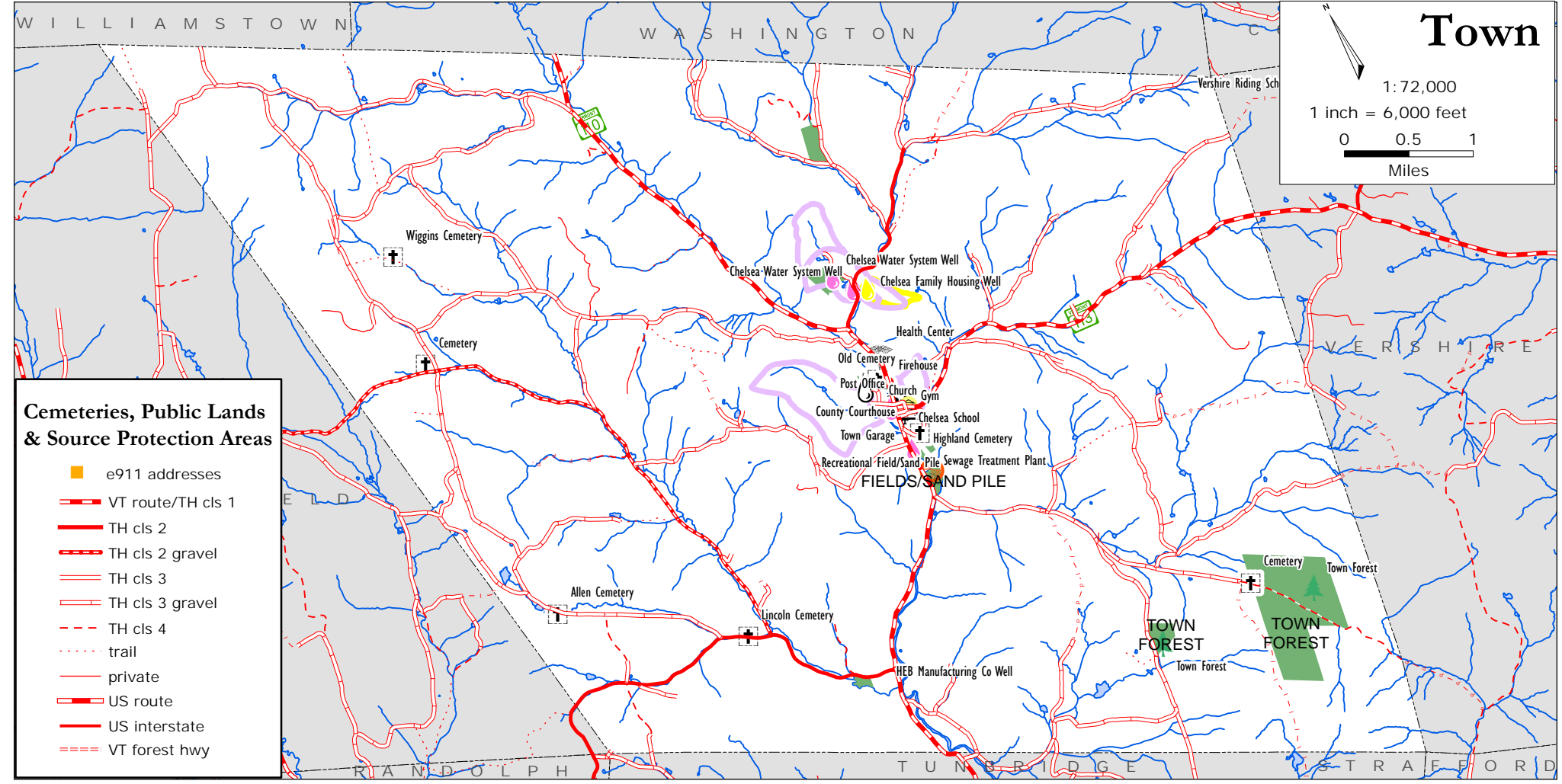
**Adopted:**

- Chelsea School
- Church
- County Court & Offices
- Firehouse
- Gym
- Cemeteries
- Post Office
- Rec. Field/Sand Pile
- Wastewater Treatment
- Water System (pink, black or yellow)
- Town Garage
- Town Hall/Library
- Source Protection Area (pink, white or yellow)
- Surface Water
- Tax Parcels
- Town Owned Lands

**TRORC**

Two Rivers-Ottawaquechee  
REGIONAL COMMISSION

[trorc.org](http://trorc.org)



**Town**

1:72,000

1 inch = 6,000 feet

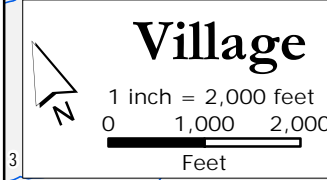
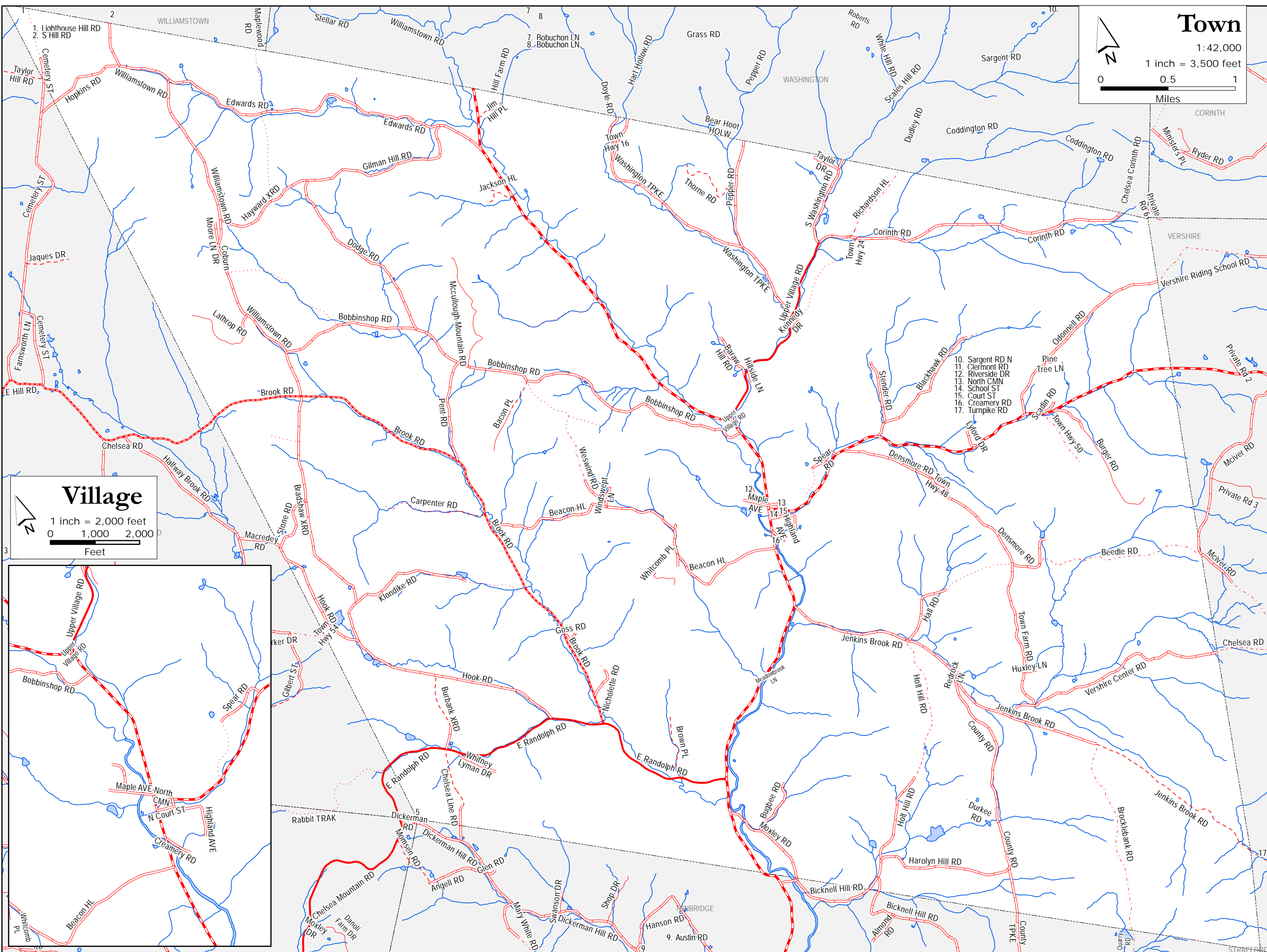
0 0.5 1

Miles

- Cemeteries, Public Lands  
& Source Protection Areas**
- e911 addresses
  - VT route/TH cls 1
  - TH cls 2
  - TH cls 2 gravel
  - TH cls 3
  - TH cls 3 gravel
  - TH cls 4
  - trail
  - private
  - US route
  - US interstate
  - VT forest hwy

Current and Future  
**Transportation**  
**Town Plan**  
 Chelsea, Vermont  
*Map 5 of 7*

**Adopted:**



- 10. Sargent RD N
- 11. Clermont RD
- 12. Riverside DR
- 13. North CMN
- 14. School ST
- 15. Court ST
- 16. Creamery RD
- 17. Turnpike RD




- water
- VT route/TH cls 1
- TH cls 2
- - - TH cls 2 gravel
- TH cls 3
- - - TH cls 3 gravel
- . . . TH cls 4
- - - trail
- private
- US route
- US interstate
- - - VT forest hwy




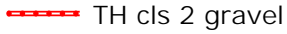

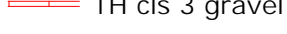
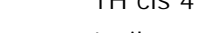


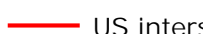
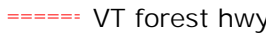

# VT Downtown Program Designated Village and National Register of Historic Places Area

Town Plan  
Chelsea, Vermont  
Map 6 of 7

Adopted:

**Village**  
1:4,800  
1 inch = 400 feet  
0 200 400  
Feet

-  National Register of Historic Places
-  VT designated Village under State Downtown Program
-  town lands
-  tax parcels

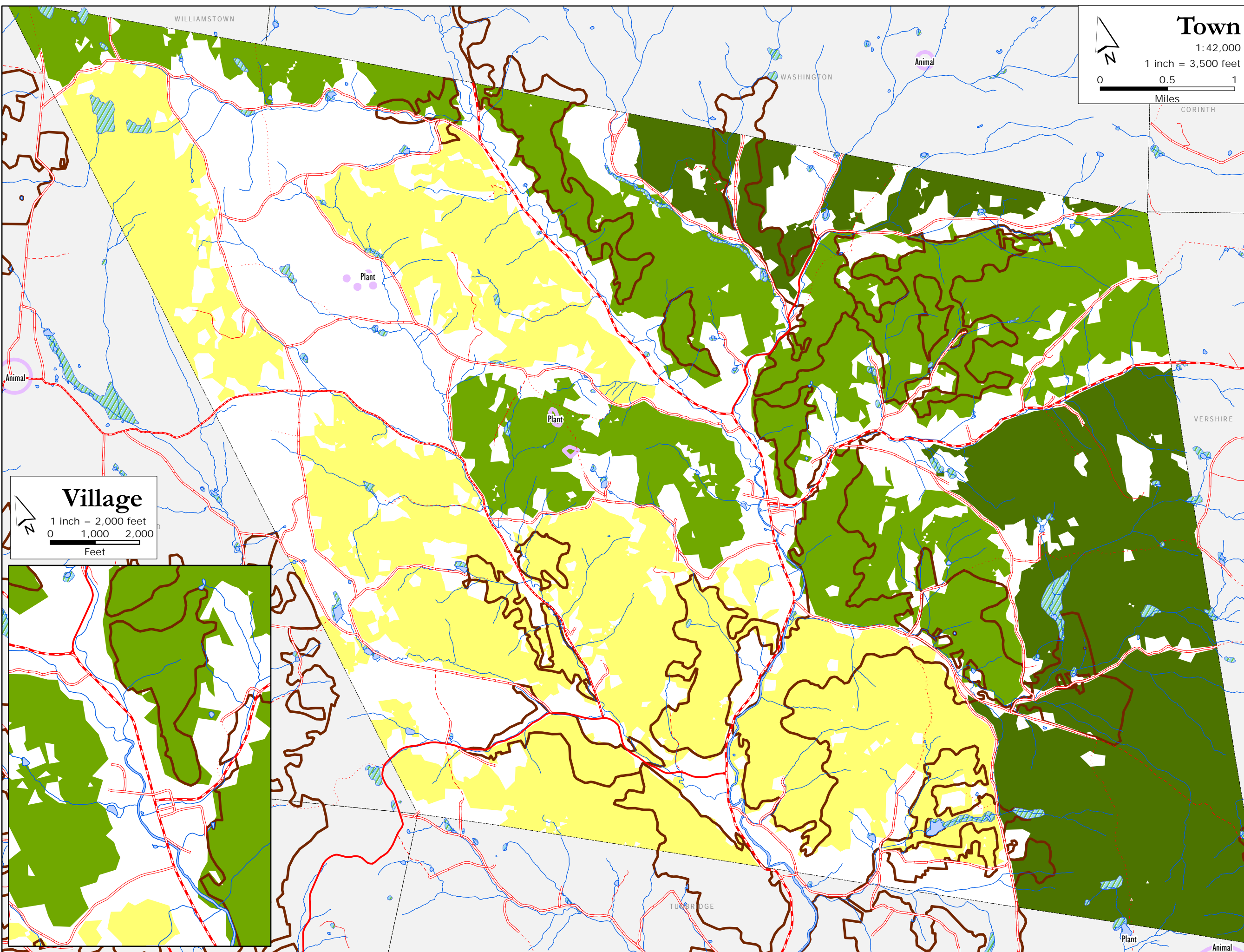
-  water
-  VT route/TH cls 1
-  TH cls 2
-  TH cls 2 gravel
-  TH cls 3
-  TH cls 3 gravel
-  TH cls 4
-  trail
-  private
-  US route
-  US interstate
-  VT forest hwy

**Natural Resources**  
**Town Plan**  
 Chelsea, Vermont  
*Map 7 of 7*

**Adopted:**

**Town**  
 1:42,000  
 1 inch = 3,500 feet  
 0 0.5 1  
 Miles

**Village**  
 1 inch = 2,000 feet  
 0 1,000 2,000  
 Feet



- VCD2a - Highest Priority Connectivity Blocks
- VCD2b - Priority Connectivity Blocks
- VCD1b - Priority Interior Forest Blocks
- Deer Wintering Areas
- Vermont State Wetlands
- Endangered Species

Funded in part by a Municipal Planning Grant from the VT Dept. of Housing and Community Affairs

- water
- VT route/TH cls 1
- TH cls 2
- TH cls 2 gravel
- TH cls 3
- TH cls 3 gravel
- TH cls 4
- trail
- private
- US route
- US interstate
- VT forest hwy