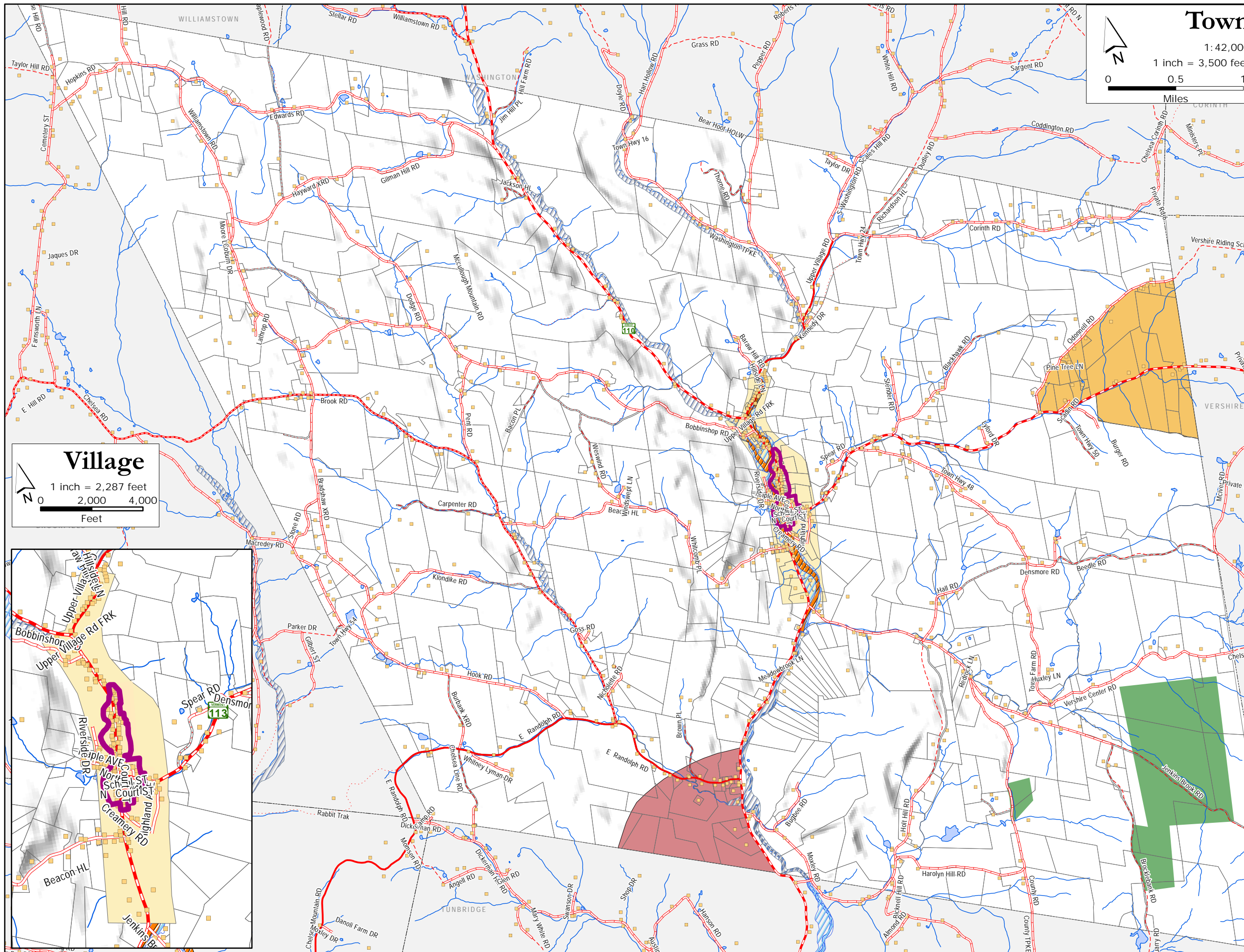


Future Land Use Town Plan

Chelsea, Vermont

Map 1 of 7

Draft: 7/20/23



Current Land Use

Town Plan

Chelsea, Vermont

Map 2 of 7

Draft: 7/20/23



Funded in part by a Municipal Planning Grant from the VT Dept. of Housing and Community Affairs

Primary
Agriculture
Areas

Town Plan
Chelsea, Vermont

Map 3 of 7

Draft: 7/20/23

- PRIME AG.
- SECONDARY STATEWIDE AG.
- Vermont State Wetlands
- PUBLIC LANDS
- PRIVATE CONSERVED LANDS

Funded in part by a Municipal Planning Grant from the VT Dept. of Housing and Community Affairs

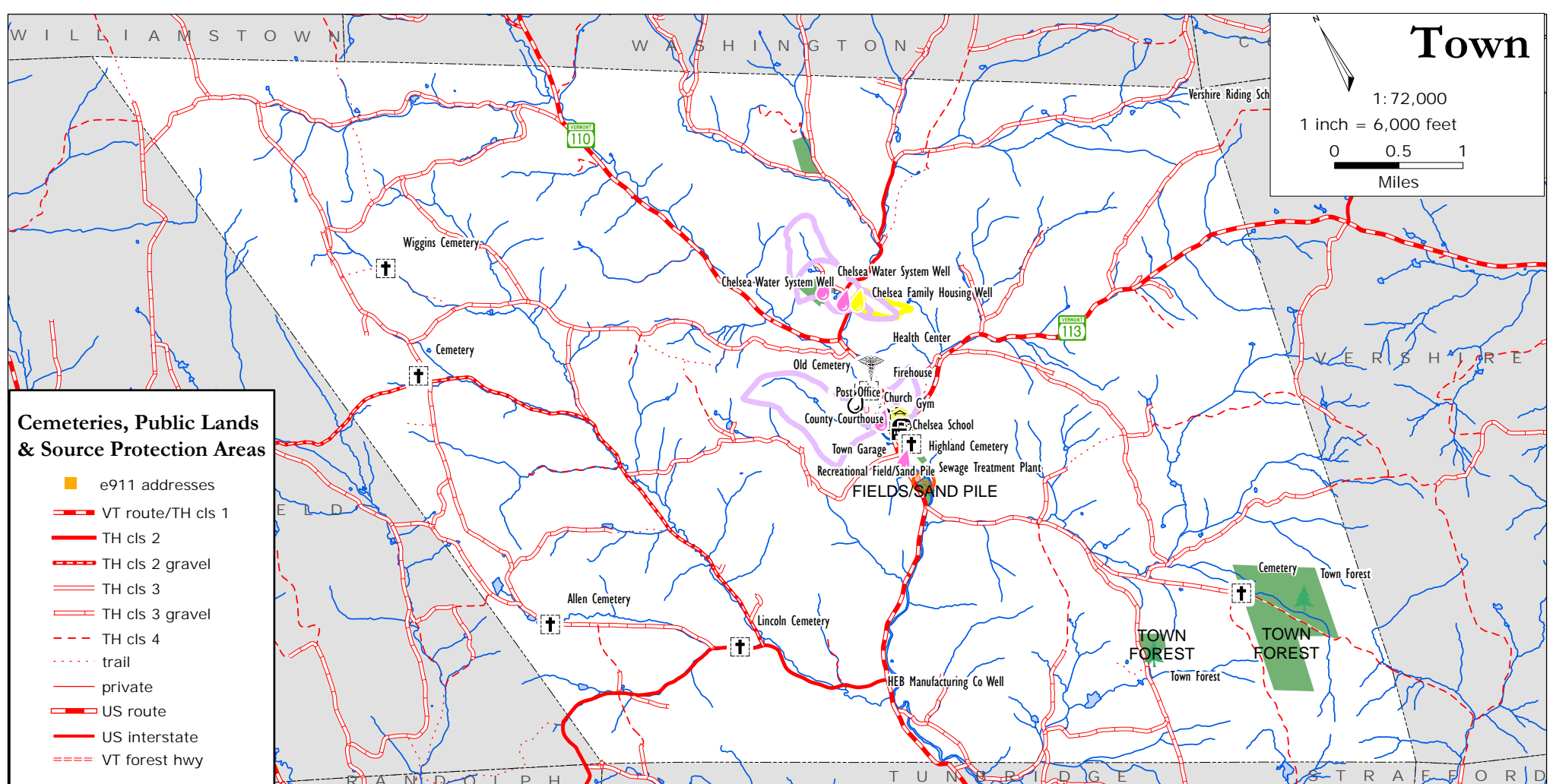
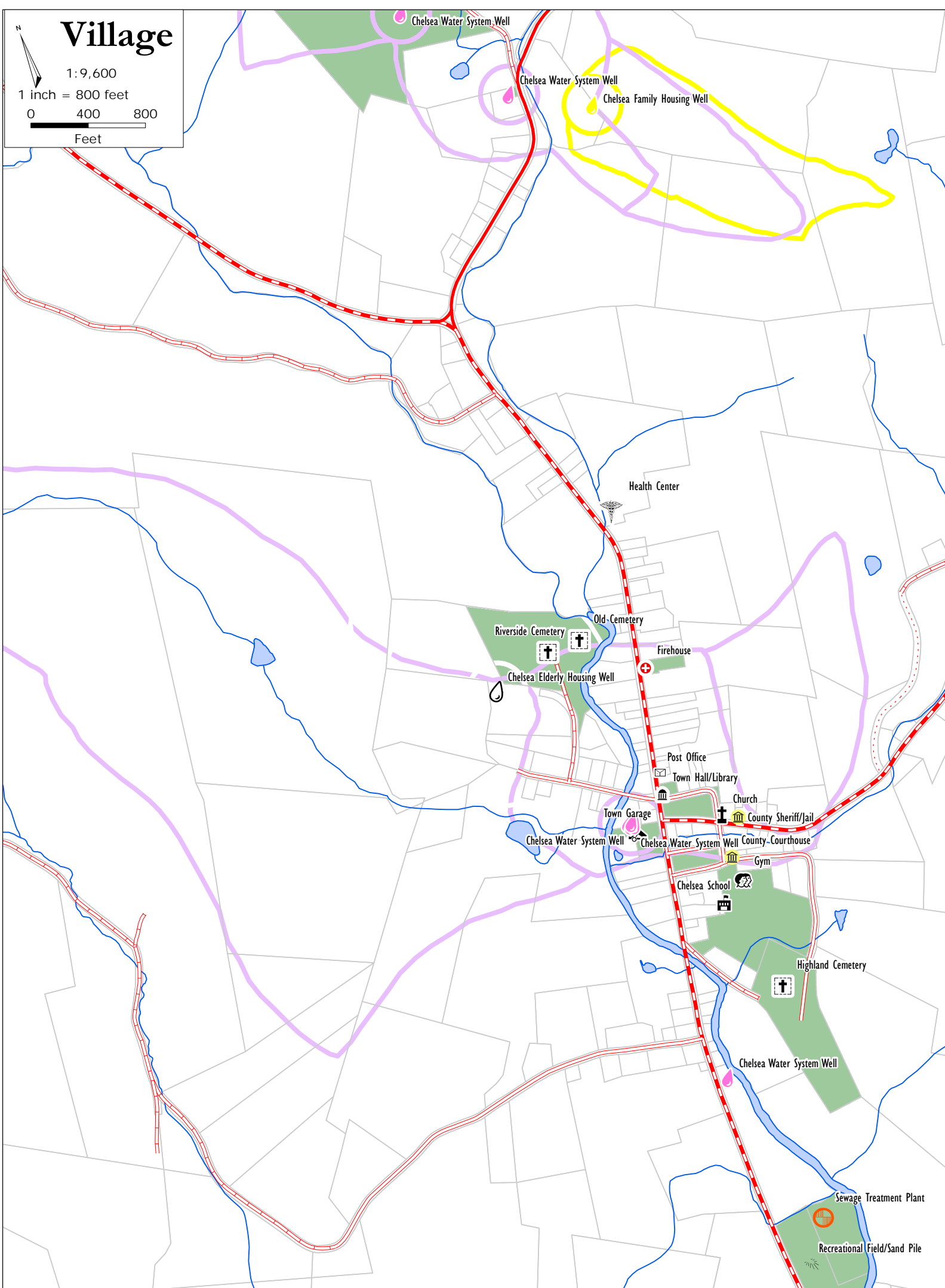
- water
- e911 address
- VT route/TH cls 1
- TH cls 2
- TH cls 2 gravel
- TH cls 3
- TH cls 3 gravel
- TH cls 4
- trail
- private
- US route
- US interstate
- VT forest hwy

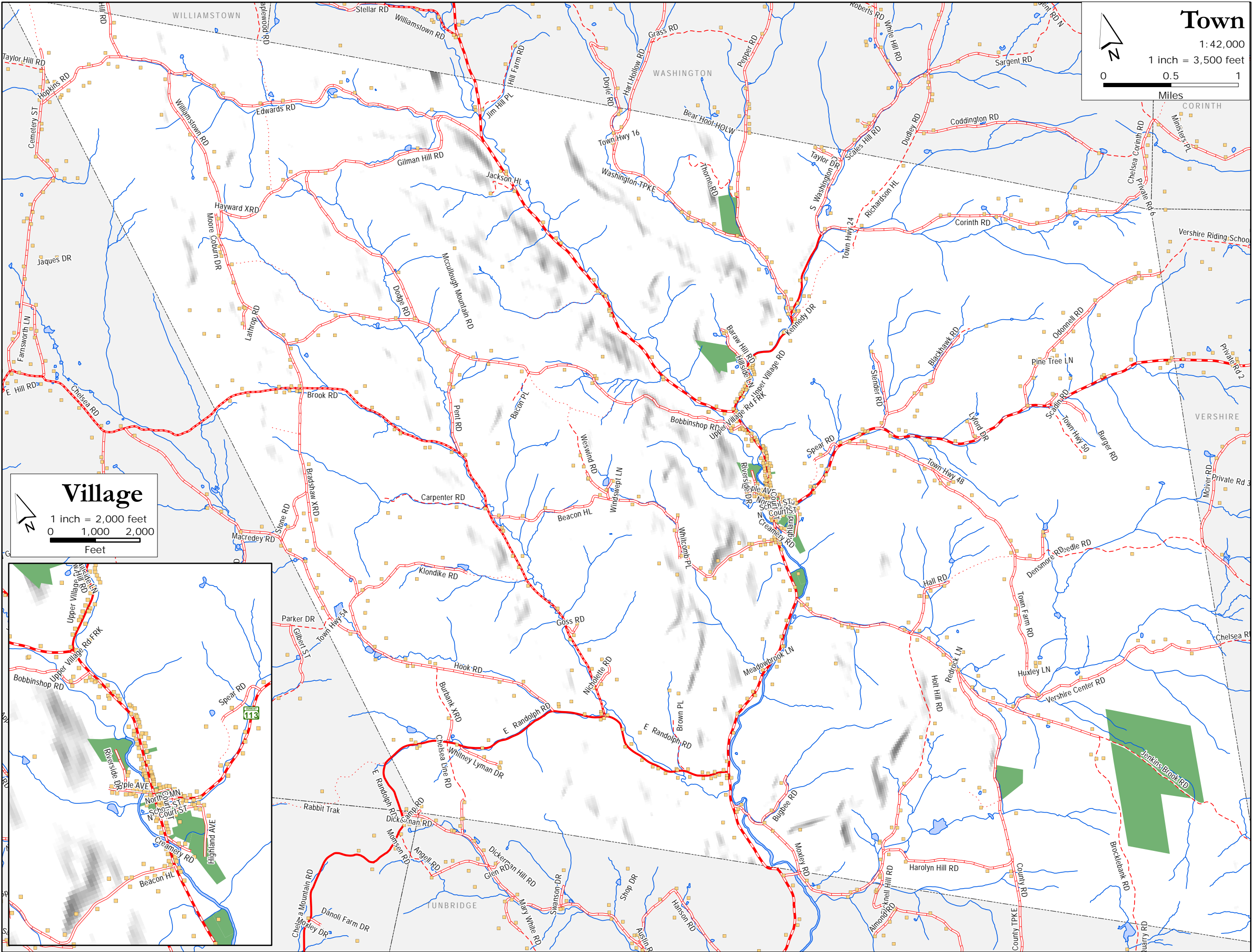


Map 4 of 7

Funded in part by a Municipal Planning Grant from the VT Dept. of Housing and Community Affairs

- 
- The logo for the Two Rivers-Ottawaquechee Regional Commission (TRORC) features the acronym "TRORC" in a stylized font. The "T" and "R" are green, while the "O" is a blue silhouette of a river flowing into a lake. The "R" and "C" are blue. Below the acronym, the full name "Two Rivers-Ottawaquechee REGIONAL COMMISSION" is written in green, with "REGIONAL COMMISSION" in all caps. At the bottom, the website "trorc.org" is displayed in green.





Town

1:42,000

1 inch = 3,500 feet

0 0.5 1

Miles

Village

1 inch = 2,000 feet

0 1,000 2,000

Feet

Funded in part by a Municipal Planning Grant from the VT Dept. of Housing and Community Affairs

- water
- VT route/TH cls 1
- TH cls 2
- TH cls 2 gravel
- TH cls 3
- TH cls 3 gravel
- TH cls 4
- trail
- private
- US route
- US interstate
- VT forest hwy

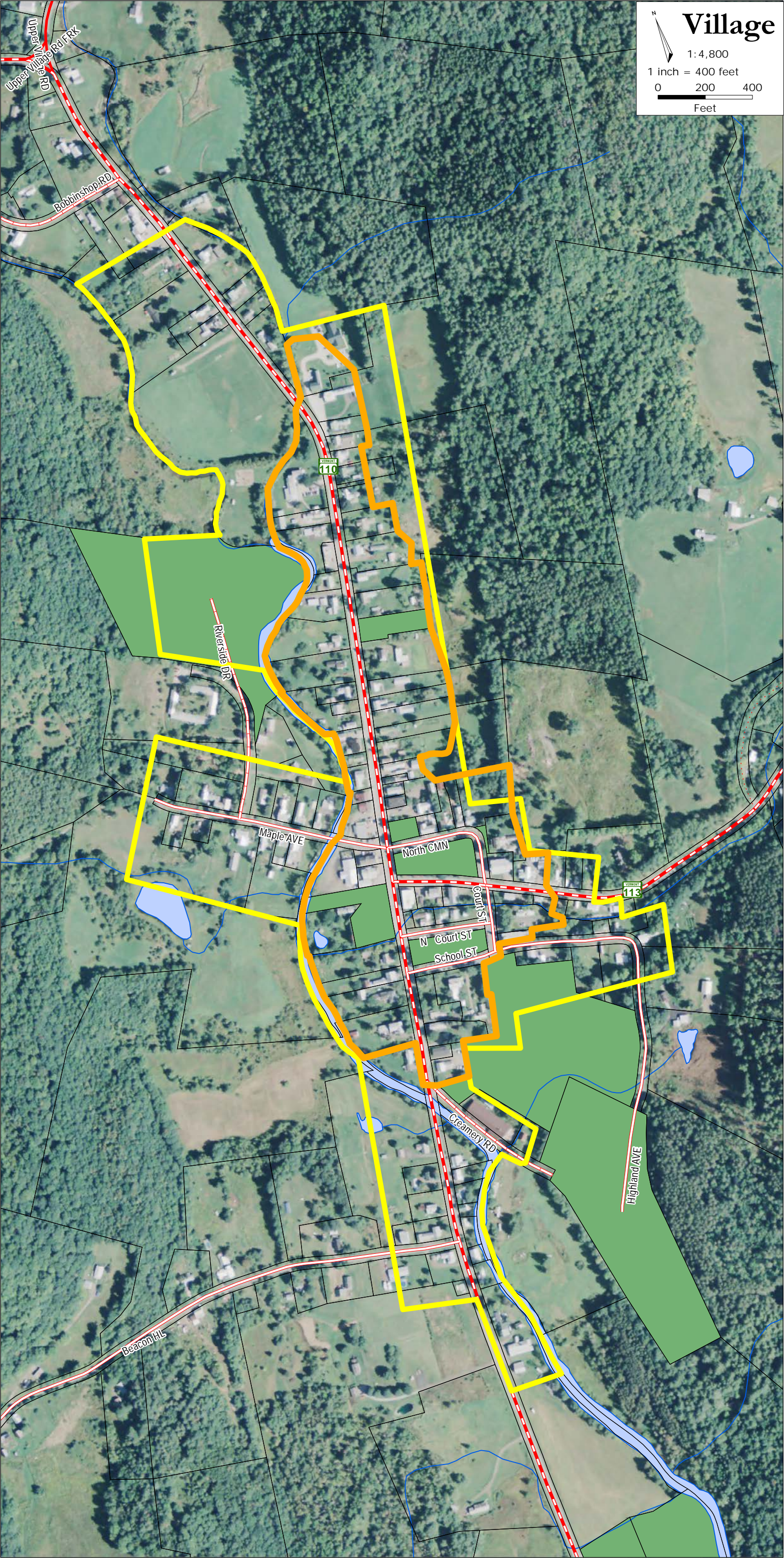


Two Rivers-Ottawaquechee
REGIONAL COMMISSION

trorc.org

Transportation Town Plan Chelsea, Vermont Map 5 of 7





Draft: 7/20/23











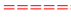



VT Downtown Program Designated Village and National Register of Historic Places Area

Town Plan
Chelsea, Vermont
Map 6 of 7
Draft: 7/20/23

Funded in part by a Municipal Planning
Grant from the VT Dept. of Housing and
Community Affairs

-  National Register
of Historic Places
-  VT designated
Village under
State Downtown
Program
-  town lands
-  tax parcels

-  water
-  VT route/TH cls 1
-  TH cls 2
-  TH cls 2 gravel
-  TH cls 3
-  TH cls 3 gravel
-  TH cls 4
-  trail
-  private
-  US route
-  US interstate
-  VT forest hwy

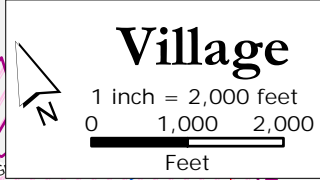
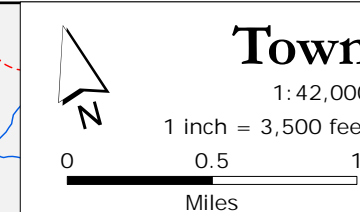
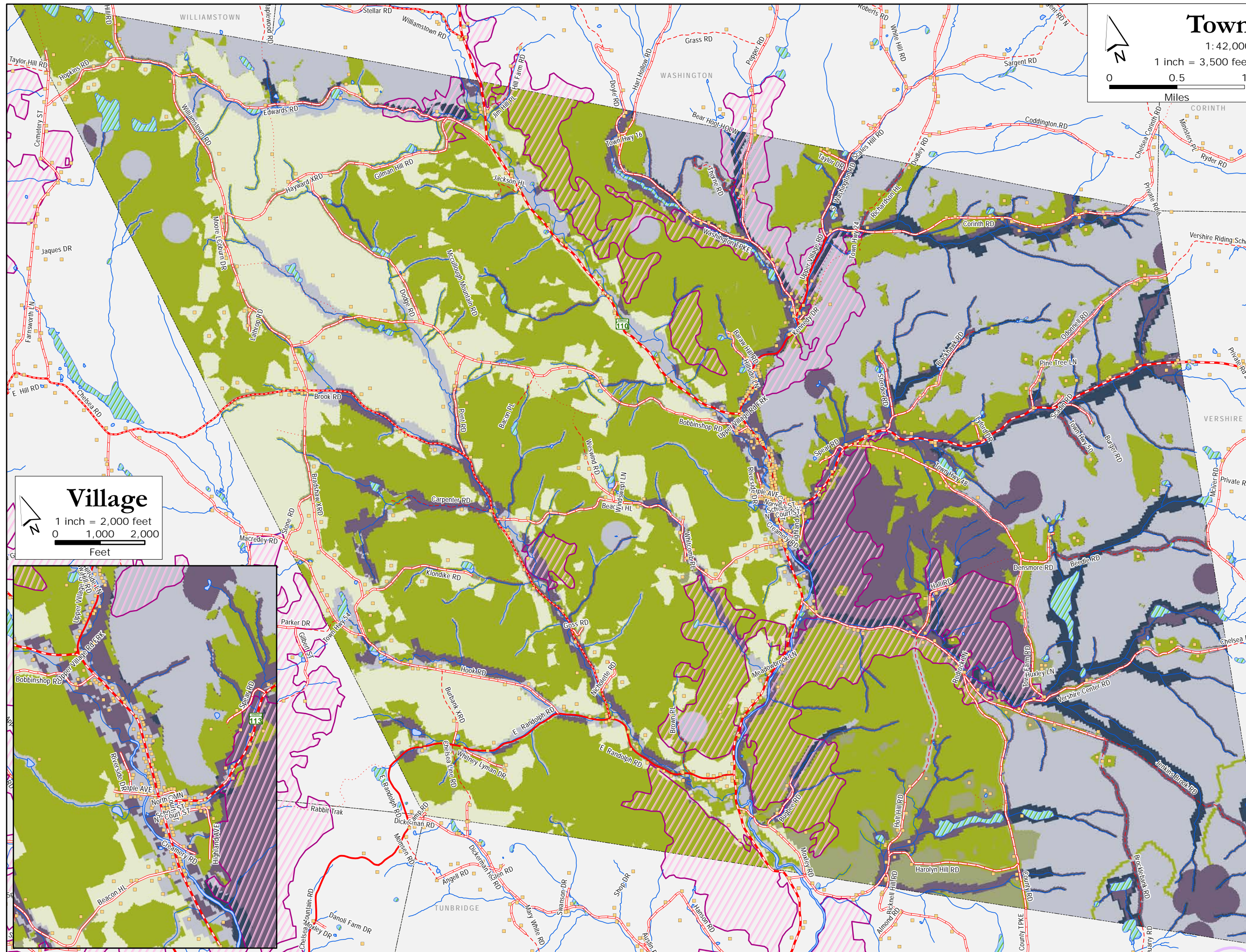
Natural Resources

Town Plan

Chelsea, Vermont

Map 7 of 7

Draft: 7/20/23



Biodiversity Concentrations	
	Tier 1 - Greatest
	Tier 2 - Very High
	Tier 3 - High
	Tier 4 - Moderate
	Tier 5 - Low
	Tier 6 - Insufficient Data

- Deer Wintering Areas
- Vermont State Wetlands
- Endangered Species

Funded in part by a Municipal Planning Grant from the VT Dept. of Housing and Community Affairs

- water
- VT route/TH cls 1
- TH cls 2
- TH cls 2 gravel
- TH cls 3
- TH cls 3 gravel
- TH cls 4
- trail
- private
- US route
- US interstate
- VT forest hwy